



INTERNATIONAL HOSPITAL FEDERATION
35th WORLD HOSPITAL CONGRESS
SEOUL 2007

INTERNATIONAL HOSPITAL FEDERATION 35th World Hospital Congress

Vision and Strategy for Ubiquitous Healthcare

: Seamless Healthcare across all Healthcare Settings and Contexts



November 6 - 8, 2007, Seoul, Korea
COEX Convention & Exhibition Center

Final Announcement



INTERNATIONAL HOSPITAL FEDERATION
35th WORLD HOSPITAL CONGRESS
SEOUL 2007

Secretariat of IHF 35th World Hospital Congress

Korean Hospital Association(KHA)

13-15F Hyundai Bldg., 35-1 Mapo-dong, Mapo-gu, Seoul 121-737, Korea
Tel : +82-2-705-9240(~4) Fax : +82-2-705-9269 E-mail : intlaffairs@kha.or.kr, ose@kha.or.kr

COEX Convention Team(PCO)

COEX, World Trade Center, Samseong-dong, Gangnam-gu, Seoul 135-731, Korea
Tel : +82-2-6000-1087 Fax : +82-2-6000-1306 E-mail : coordinator@kha.or.kr



Host / Organizer International Hospital Federation[IHF] / Korean Hospital Association[KHA]
Supported by Ministry of Health and Welfare, Seoul Metropolitan Government
Korea Tourism Organization, Seoul Convention & Visitors Bureau

Congratulatory Message

It is my pleasure to welcome you to the 35th International Hospital Federation 2007 Seoul Congress. I would also like to thank the hospital administrators and medical staff from all over the globe for taking part in the congress.

Having solidified its status as one of the world's top ten economic superpowers, Korea has also underwent remarkable progresses in the public health and medical field to rival those of other advanced nations. It is the result of the government and the health and medical industry working together to improve quality of life and provide equal medical opportunities to all people.

The Korean government pledges its full, continued support to enhance competitiveness of the public health and medical industry in this era of globalization and to encourage medical workers and institutions to fulfill their missions of saving people's lives and promoting health of mankind.

The 35th International Hospital Federation 2007 Seoul Congress is certain to be a good opportunity to witness the current status and future of Korea's fast-growing health and medical industry and share public health and medical experiences and information with other participating nations.

I once again hope that the 35th IHF 2007 Seoul Congress plays an instrumental role in propelling the worldwide medical industry forward. I wish all of you good health and happiness.

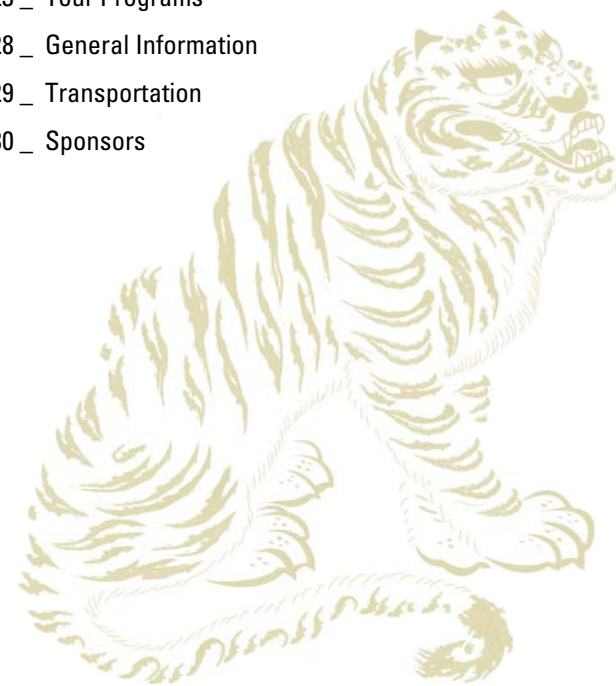


Byun Jae Jin

Byun, Jae Jin
Minister of Health and Welfare
Republic of Korea

CONTENTS

- 03 _ Messages
- 06 _ Congress Overview
- 10 _ Program at a glance
- 11 _ Congress Programs
- 15 _ Invited Speakers
- 16 _ Social Programs
- 17 _ Registration
- 18 _ Accomodations
- 20 _ Venue
- 22 _ Star Alliance & Hospital Tour
- 23 _ Tour Programs
- 28 _ General Information
- 29 _ Transportation
- 30 _ Sponsors



Vision and Strategy for Ubiquitous Healthcare

IHF 35th WORLD HOSPITAL CONGRESS SEOUL 2007

Vision and Strategy for Ubiquitous Healthcare

IHF 35TH WORLD HOSPITAL CONGRESS Vision and Strategy for Ubiquitous Healthcare



Congratulatory Message



Dear Colleague,

The 35th World Hospital Congress of International Hospital Federation will provide the chance to exchange ideas and viewpoints with colleagues from around the world on some of the most pressing issues facing leaders in the healthcare sector.

Korea is a leader in the development and the application of medical technology and this will be one of the main points of emphasis of this event. I trust that in addition to new perspectives, health care issues that you will also gain from will be new practical approaches to be applied in your home country.

The city of Seoul is an exciting destination and I hope that you will be able to explore some of the city's rich cultural history during your stay.

I look forward to seeing you in Seoul.

With warmest regards,

Gerard Vincent

President
International Hospital Federation

Welcome Message



I would like to extend to you my heartfelt invitation to the IHF 35th World Hospital Congress. I believe this is an opportunity for you to witness the time-honored cultural heritage and the economic drive that propelled Korea to the 11th largest economy in the world, as well as its remarkable IT technology and infrastructure that powered amazing advances for Korean hospitals. Your presence at the Congress will be greeted with our warmest hospitality.

As the organizer of the IHF 35th World Hospital Congress, the Korean Hospital Association resolved to turn this global event into a new milestone in the 120-year history of modern Korean medicine that can provide Korea with a base to compete against other advanced medical establishments around the world and that elevates the level of the Korean medical industry to meet the global standards.

The IHF World Hospital Congress is a biennial event that serves as a venue for exchanging the latest information on world health and medicine. The IHF 35th World Hospital Congress is certain to be a global affair where new knowledge on hospital management is acquired and such hospital-related industries as pharmaceutical, medical equipment, IT, BT, and NT sectors are promoted.

I hope the IHF 35th World Hospital Congress would provide a new vision that is able to guide hospitals through the 21st century. I once again ask for your attendance at the Seoul Congress to see Korea's hospital industry, clinical medicine, and medical developments and share your thoughts as partners working to improve human health on the roles and missions of hospitals.

Sincerely,

Chul Soo Kim

President
Korean Hospital Association

Welcome Message



We are very happy to hold this IHF 35th World Hospital Congress, which will be held in November of 2007 in Seoul. I would like to particularly thank those who have worked so hard to make this opportunity possible.

Many world-class hospitals will participate in this congress, and as the hosting country we will do our best to make it a success. It is my belief that the conference will serve as a great opportunity in further developing Korean hospitals.

The theme of this congress is focused on improving the competitive power of hospitals around the world. Particularly, we will focus on the diverse applications of BT & IT, as well as reviewing to what extent both fields can compliment each other.

I am certain that this congress will be beneficial for Korea, which is currently facing an opening of its medical market.

Furthermore, it is my belief that each session will help to resolve currently exiting problems in the opening of our medical market.

Although there are many difficulties for Korean hospitals, including many governmental restrictions, I believe that it is necessary for us to bring our challenges to the attention of the Korean public, as well as work to fix various problems. Once again, I would like to thank all participants for their kind cooperation and hope you find the conference rewarding.

Sincerely,

Hoon Sang Chi

President
IHF 35th World Hospital Congress

I cannot easily forget the tremendous honor and pride I harbored at the 35th IHF Pan Regional Conference being held on March 20-21, 2004, in Dubai, UAE, when the dedication and hard work of the Korean delegation resulted in Korea's selection as the host of the IHF 35th World Hospital Congress.

I think that Korea was chosen to host the IHF 35th World Hospital Congress because hospital officials worldwide agreed that Korean hospitals were well qualified to sponsor this grand event. We, therefore, will respond to the trust being placed on us by doing our best to make the congress a resounding success.

To that end the Organizing Committee of the IHF 35th World Hospital Congress has set up relevant task force teams for processing such areas as sciences, event management, PR, exhibition, and financial matters. In particular, the hospital informatization programs, which are expected to take a large part of the congress presentations, will be based on Korea's world-leading information and telecommunication technology, thus providing hospital officials attending the congress with an opportunity to access to valuable knowledge. I would like to ask you to take part in the congress so that your experience can serve to advance hospital management worldwide.

I would like to note that the IHF 35th World Hospital Congress can not be successfully hosted with the works of the organizing committee alone. Only when all member hospitals and the general healthcare industries come to be involved actively and when the governments lend their due support, and communities understand our roles, we can reap the anticipated results and make the congress a great success.

Sincerely,

Kwang Tae Kim

Chairman
IHF 35th World Hospital Congress Organizing Committee

Congress Overview

Outline

- ✦ **Title**
International Hospital Federation 35th World Hospital Congress
- ✦ **Theme**
Vision and Strategy for Ubiquitous Healthcare
: Seamless Healthcare across All Healthcare Settings and Contexts
- ✦ **Date**
November 6 - 8, 2007
- ✦ **Venue**
COEX Convention & Exhibition Center, Seoul, Korea
- ✦ **Host**
International Hospital Federation(IHF)
- ✦ **Organizer**
Korean Hospital Association(KHA)
- ✦ **Supported by**
Ministry of Health and Welfare, Seoul Metropolitan Government
Korea Tourism Organization, Seoul Convention & Visitors Bureau
- ✦ **Official Language**
English, Korean

Emblem



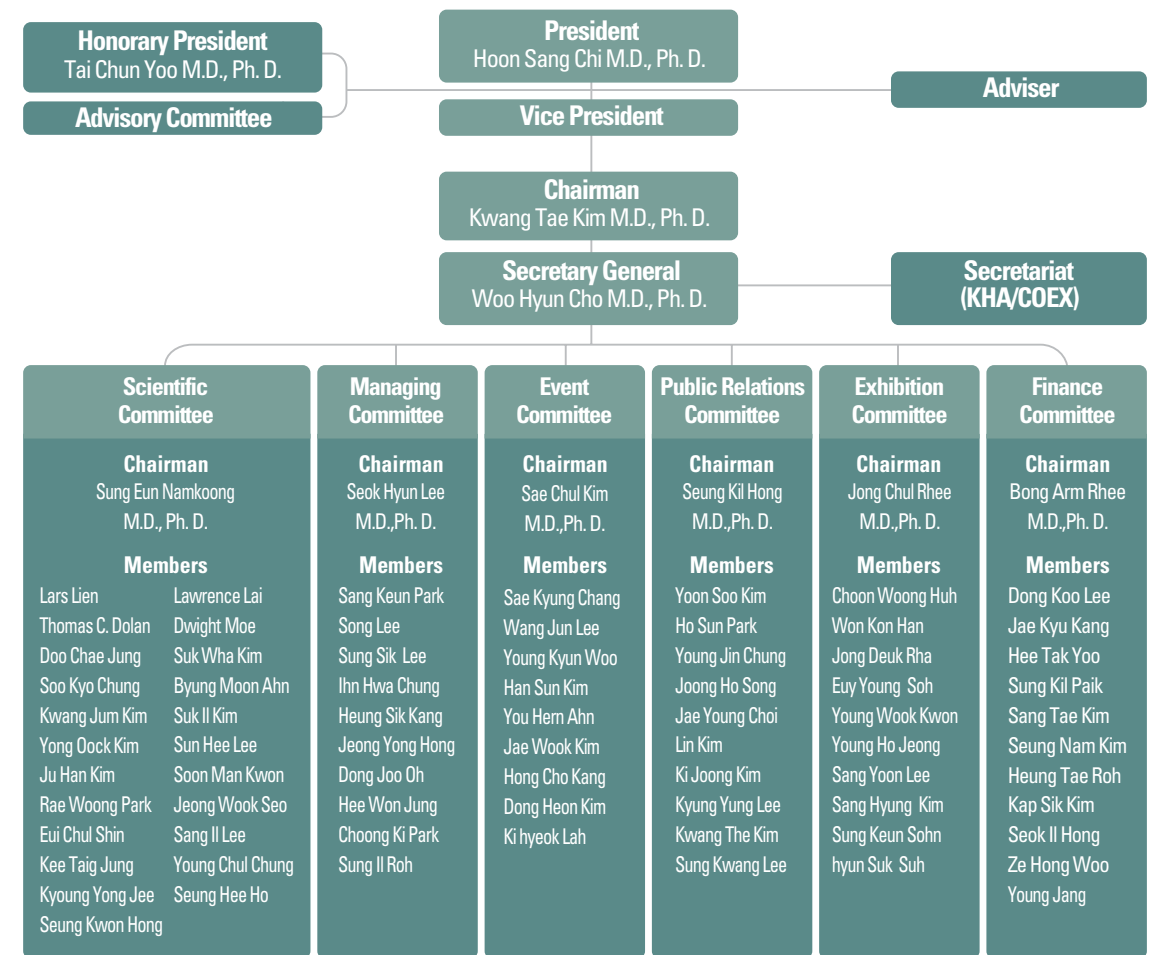
The emblem for the IHF 35th World Hospital Congress symbolizes the "Harmony" between the "Globe" and "Korea".

The globe in the middle signifies the hospitals around the world and the three ovals circling the globe represents the ever-progressing Korean medical and health industry. The elliptical orbit is an abstract depiction of long, swirling ribbons on the hats worn by colorfully clad Korean traditional folk dancers. The three colors of red, yellow, and green are from the tri-colored band on the traditional Korean folk dance costume.

This emblem demonstrates K.H.A.'s commitment to promote the status of Korean hospitals through the IHF 35th World Hospital Congress and cooperating and advancing together with hospitals worldwide for health of mankind.

Organizing Committee & Secretariat

Organizing Committee



Secretariat

Korean Hospital Association (KHA)

13-15F Hyundai Bldg., 35-1 Mapo-dong, Mapo-gu, Seoul 121-737, Korea
Tel : +82-2-705-9240(~4) Fax : +82-2-705-9269 E-mail : intlaffairs@kha.or.kr, ose@kha.or.kr

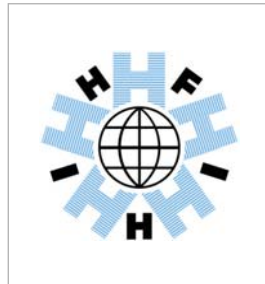
COEX Convention Team (Professional Convention Organizer)

COEX, World Trade Center, Samseong-dong, Gangnam-gu, Seoul 135-731, Korea

Coordinator	Hyeon Cheol Jo	+82-2-6000-1087	coordinator@kha.or.kr
Scientific Committee	Seo Young Park	+82-2-6000-8138	scientific@kha.or.kr
Managing Committee	Min Young Kim	+82-2-6000-8186	managing@kha.or.kr
Event Committee	Soo Young Shin	+82-2-6000-8182	event@kha.or.kr
Public Relations Committee	Se Jeong Ro	+82-2-6000-8135	publicrelations@kha.or.kr

What is IHF?

Who we are



The International Hospital Federation (IHF) is the successor to the International Hospital Association, which was established in 1929 after the first International Hospital Congress in Atlantic City, USA. The Association ceased to function during the Second World War, but was revived with a new title in 1947 by some of the pre-war members, under the presidency of the late Dr Rene Sand of Belgium. It is constituted under the Civil Code of Switzerland. The Secretariat which since 1947 was based in London, moved in November 2002 to Ferney Voltaire, France (Greater Geneva Area).

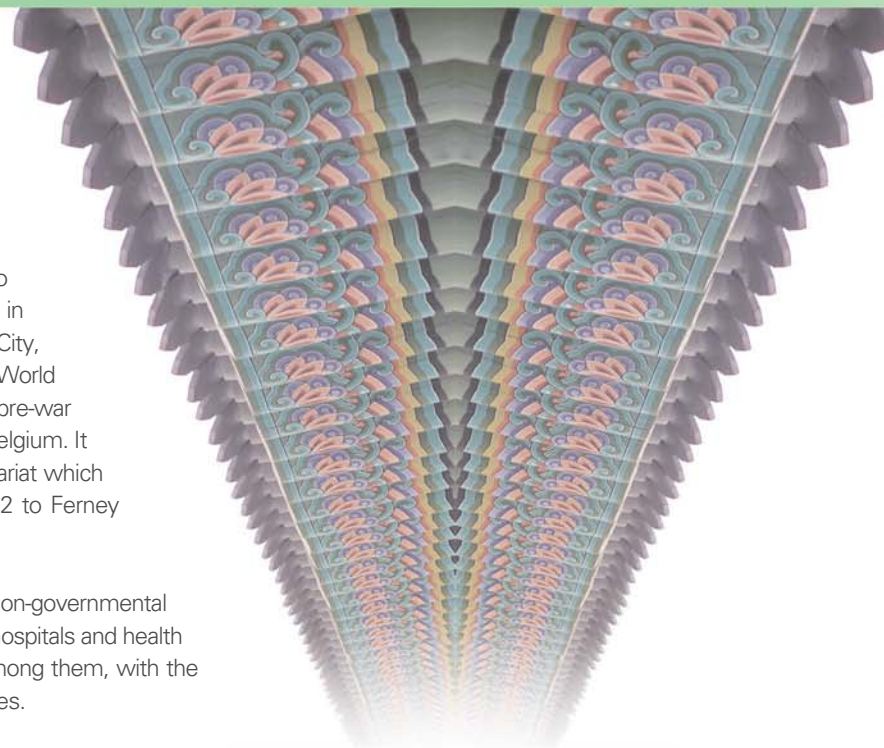
The International Hospital Federation (IHF) is an international non-governmental organisation, supported by members from over 100 countries. As the worldwide body for hospitals and health care organisations it develops and maintains a spirit of cooperation and communication among them, with the primary goal of improving patient safety and of promoting health in underserved communities.

Vision

The IHF vision is to become a world leader in facilitating the exchange of knowledge and experience in health sector management. Through the dissemination of evidence-based information, IHF will help improve patient care quality around the globe.

- ✦ IHF collects, collates, publishes and facilitates the exchange of information and ideas on best practice in hospital and health care management.
- ✦ It assists in the creation of environments that support organisations in the promotion and delivery of health care.
- ✦ It fosters international partnerships that promote interaction among public and private hospitals and health care organisations, the community and commercial entities.

For more information, please visit www.ihf-fih.org



What is KHA?



Introduction of Korean Hospital Association

With a membership comprised of hospitals all over Korea responsible for saving lives and promoting public health, the main mission of the Korean Hospital Association (KHA) has been to guarantee medical service to the public by improving hospital facilities and services. Since its founding nearly half a century ago on July 2nd, 1959, the KHA has been leading the efforts to upgrade public medical care and further advance the hospital industry.

At the time of the KHA establishment, the number of hospitals in Korea, including nursing homes, stood at mere 100 or so. As of March 2006, however, the figure exploded to some 1,500 hospitals all over the nation, surpassing the global average in terms of both quantity and quality.

The key functions of the KHA include such hospital development projects as hospital management surveys and analyses, improvement of hospital taxation system, prevention of hospital labor disputes, e-commerce pilot project, hospital policy research, prevention and mediation of medical malpractice cases, and collection and analyses of medical information. In addition, the KHA hosts a wide range of on-the-job programs and seminars to train resident doctors and improve the quality of medical services. Other responsibilities of the KHA include leading publicity campaigns and community volunteer services to promote member hospitals.

Enjoying a stunning growth every year, the KHA became a legal representative of the industry in 2003 to befit its status and, to this day, has been working tirelessly to promote public health through hospital development with the belief that the advanced level of medical services is guaranteed only when the quality of public medical service is raised first.

For more information, please visit www.kha.or.kr



IHF 35TH WORLD HOSPITAL CONGRESS
Vision and Strategy for Ubiquitous Healthcare

Program at a Glance

** P.S. : Parallel Session

Date/Time	Day 1 Nov 6	Day 2 Nov 7	Day 3 Nov 8
9:00		Plenary Session 2	Plenary Session 4
10:00	Opening Ceremony - Keynote Speech 1 - Keynote Speech 2	Coffee Break	Parallel Session 13, 14, 15 The 23rd Convention on Hospital Management (KHA) IHF Satellite Session 2 AHF Symposium
11:00		Parallel Session 4, 5, 6, 7 Free Paper Session 2 IHF Assembly Meeting	
12:00	Lunch & Exhibition Tour	Lunch	Closing Ceremony
13:00			Hospital Tour
14:00	Plenary Session 1	Plenary Session 3	
15:00	Coffee Break	Coffee Break	
16:00	Parallel Session 1, 2, 3 Free Paper Session 1 Special Interest Session IHF Satellite Session 1	Parallel Session 8, 9, 10, 11, 12 Free Paper Session 3	
17:00			
18:00	Welcome Reception	Gala Dinner	
19:00			
20:00			

- Social Program
- Plenary Session 1-4
- Parallel Session 1-15
- IHF Satellite Session 1
- Free Paper Session 1-3

Congress Programs

Nov.6 (Tue)

10:00 - 12:00	Opening Ceremony & Keynote Speech Healthcare : The end of Business as we know it Arnold Kaluzny, University of North Carolina at Chapel Hill, USA Ubiquitous Healthcare through Digital Innovation Chae Chol Shin, LG CNS, Korea
12:00 - 14:00	Exhibition Tour & Lunch
14:00 - 14:50	Plenary Session 1 U-Healthcare : Is it an opportunity or a threat to hospitals? Chang Il Park, Severance Hospital, Korea
14:50 - 15:20	Coffee Break
15:20 - 17:20	Parallel Session 1: Hospital Information Systems Do we really need electronic medical record in a hospital? Shigekoto Kaihara, International University of Health and Welfare, Japan U-Severance: Current and Future Prospects Byung-Chul Chang, Yonsei University Health System, Korea Medical Information Systems of Seoul National University Hospital in the era of U-Health Chun Kee Chung, Seoul National University Hospital, Korea Electronic Health Records: Promoting Efficiency and Quality through Collaboration Jeffrey D. Miller, Hewlett Packard Company, USA Parallel Session 2: Ubiquitous Technologies for Healthcare Ubiquitous healthcare service in a government trial Rae Woong Park, Ajou University, Korea Bio-signal Monitoring Technology for Ubiquitous Healthcare Seunghwan Kim, Electronics and Telecommunications Research Institute, Korea Practical applications & Strategy for the Ubiquitous Technology Dong-Kyun Park, Gachon University Gil Medical Center, Korea Telemedicine today and in the future Steinar Pedersen, University Hospital of Northern Norway, Norway RFID in hospital logistics and healthcare Noh-Hyun Park, Seoul National University Hospital, Korea Parallel Session 3: Patient Safety The United States Patient Safety Experience: Successes and Continuing Challenges Fred L. Brown, The Joint Commission, USA Patient Safety: The Search for Global Solutions Dennis O'Leary, The Joint Commission, USA What have we learned from the patient safety reporting? Chung-Liang Shih, Taiwan Joint Commission on Hospital Accreditation, Taiwan Improving patient safety through using information technology Yoon Kim, R&D Center for Interoperable EHR, Korea Free Paper Session 1: Topics on Hospital Accreditation and Quality of Care Special Interest Session: State of the Arts in Medical Robotics IHF Satellite Session 1 * Session Coordinated by the Ministry of Commerce, Industry and Energy
18:00 - 20:00	Welcome Reception

Nov.7 (Wed)

09:00 - 09:50	Plenary Session 2 Ten years with the International Hospital Federation - developments and looking forward Per-Gunnar Svensson, IHF Director General, France
09:50 - 10:20	Coffee Break
10:20 - 12:20	Parallel Session 4: Global Trends and Lessons on Hospital Accreditation Systems The Reform of the Hospital Accreditation System in Taiwan Cathy Wuung, Taiwan Joint Commission on Hospital Accreditation, Taiwan ----- Accreditation Impact on Healthcare Quality: Evidence and Economics Yuichi Imanaka, Kyoto University, Japan ----- Accreditation: Enhancing Quality and Safety in a Global Health Care Market Karen Timmons, Joint Commission International, USA ----- The contemporary agendas and perspectives of the accreditation and evaluation system for the hospitals in Korea Wang Joon Lee, Incheon Sarang Hospital, Korea Parallel Session 5: Comparative Hospital Policies Hospital Policy in Japan Tomonori Hasegawa, Toho University School of Medicine, Japan ----- Public Policy for Hospitals in Singapore Meng-Kin Lim, National University of Singapore, Singapore ----- Hospital Policy in Korea Soonman Kwon, Seoul National University, Korea ----- Financial Policy for Public Hospitals in China Qingyue Meng, Shandong University, China Parallel Session 6: Organizational Issues in Healthcare Organizations Collaboration among healthcare organizations: Opportunities and challenges Shoou-Yih Daniel Lee, University of North Carolina at Chapel Hill, USA ----- Impact of globalization on hospital management: generalization of corporate governance rules in both public and private hospitals, all around the World Patrick Mordet, Ministry of Health, France ----- New Trend & New Paradigm in Healthcare In Chool Park, Ye Dental Clinic, Korea ----- Challenges We Face For Operating a Hospital Salah Fakhouri, Health Management Member of INDEX Holding, UAE Parallel Session 7: Design & Health Special Session Health Promotion by Design, Research and Application Alan Dilani, International Academy for Design and Health, Sweden ----- Korean Hospital Design, State of the Art Chang Ho Moon, Kunsan National University, Korea ----- Renewing All levels of UK Hospital Infrastructure David Stark, Keppie Design, UK ----- Healthy Promotion Hospital in Canada Tye Farrow, Canada ----- Free Paper Session 2: Topics on Healthcare Management and Policy IHF Assembly Meeting

Nov.7 (Wed)

12:20 - 14:00	Lunch
14:00 - 14:50	Plenary Session 3 Connected Healthcare: Personalized, Predictive and Preventive Medicine Neil De Crescenzo, Oracle, USA
14:50 - 15:20	Coffee Break
15:20 - 17:20	Parallel Session 8: The Role and Future Direction of Hospital Pharmacies Advancement of Pharmacy Education and Practice in the USA Philip J. Schneider, The Ohio State University, USA ----- The Changes in the Role of Korean Hospital Pharmacists for Patient-Oriented Pharmaceutical Services Kyoung-Ho Park, Seoul National University Hospital, Korea Parallel Session 9: Improvement of Nursing Quality Improvement of Nursing Quality Helen Hoising, Joint Commission Resources, USA ----- Quality Improvement and Safety Young Hee Sung, Samsung Medical Center, Korea Parallel Session 10: Union of International Architects-Public Health Group Special Session Defining a New Architecture for Healthcare Facilities in Europe and Asia; Comparisons and Lessons learned Henning Lensch, Architect, Germany ----- Recent projects Undertaken at the Architecture for Health Program at Texas A&M University George J. Mann, AIA architect, USA ----- The Future Hospital Karin Imoberdorf, ETH SIA, Switzerland ----- Best Practices in Healthcare Planning & Design Cathryn Bang, AIA architect, USA ----- Situation of the Health Care Facilities in the mid-21st Century Yasushi Nagasawa, JIA, Japan Parallel Session 11: Health Information Management in a Ubiquitous Healthcare Environment Universal Collaboration to Health Information Management Angela Randall, The Queen Elizabeth Hospital - Melbourne, Australia ----- The effective protection and management of patient's private information by the health record manager in Korean hospital Ok Nam Kim, Korean Medical Record Association, Korea Parallel Session 12: Improved Management of Nutrition Care Process The Process and Policy of Nutrition Care Process in USA Esther F. Myers, American Dietetic Association, USA ----- The Current and Future Prospects of Medical Nutrition Therapy in KOREA Eun-Mi Kim, Kangbuk Samsung Hospital, Korea ----- Free Paper Session 3: Vision and Strategy for Ubiquitous Healthcare
18:00 - 20:30	Gala Dinner

Nov.8(Thu)

09:00 - 09:50	Plenary Session 4 Globalisation Of Healthcare: Recent Trends Choon Yong Loo, Raffles Medical Group, Singapore
10:00 - 12:00	Parallel Session 13: E-Business in Healthcare E-business in Healthcare: The experience of England National Programme for IT Michael Pringle, University of Nottingham, UK
	National Health Information System Placed in EDI & DW Gyu-Young Jung, Health Insurance Review Agency, Korea
	Improved Efficiency in the Hospital Management through Medical E-Commerce Jae Hoon Choi, Ezmedicom, Korea
	Approach for Applying e-Healthcare into Elder Care Industry in Korea Sehoh Kang, Unisys Korea, Korea
	Parallel Session 14: Human Resources Management / Leadership
	To be Determined Piya Hanvoravongchai, Asia-Pacific Action Alliance on Human Resources for Health, Thailand
	New Strategy of Hospital management for Aging Society in Japan Kenshi Nishino, Nishino Hospital, Japan
	Transforming an Asian Healthcare Company into an International Organization Jonathan Seah, Parkway Group Healthcare, China
	Effective Team Building Training / Leadership Development Training Tae-Kyung Chung, Asan Medical Center, Korea
	HRM Practices and Issues of Korean Hospitals Kwang-Jum Kim, Catholic University, Korea
	Parallel Session 15: Globalization of Healthcare
	Issues and trajectories of the healthcare globalization Kee Taig Jung, Kyung Hee University, Korea
	Singapore Healthcare Institutions In The Face Of Globalisation: Raffles Experience Prem Kumar Nair, Raffles Medical Group, Singapore
	To be Determined Chinta Bhagat, McKinsey & Company Singapore office, Singapore
	Patients Without Borders Joon Pio Hong, Asan Medical Center, Korea
	The 23rd Convention on Hospital Management (KHA)
	IHF Satellite Session 2
	AHF Symposium: Financing and Reimbursement Methods of Healthcare Services in Asian Countries
12:00 - 12:30	Closing Ceremony

Invited Speakers

Keynote Speech

Kaluzny, Arnold D. (University of North Carolina at Chapel Hill, USA) Shin, Chae Chol (LG CNS, Korea)

Plenary Sessions

Crescenzo, Neil De (Oracle, USA) Park, Chang-II (Yonsei University College of Medicine, Korea)
Loo, Choon Yong (Raffles Medical Group, Singapore) Svensson, Per-Gunnar (IHf, France)

Parallel Sessions

Bang, Cathryn (UIA, USA)	Lensch, Henning (RRP architects + engineers / D AND C A, Germany)
Bhagat, Chinta (McKinsey & Company, Singapore)	Lim, Meng-Kin (National University of Singapore, Singapore)
Brown, Fred L. (The Joint Commission, USA)	Mann, George J. (Texas A&M University, USA)
Chang, Byung-Chul (Yonsei University Health System, Korea)	Meng, Qingyue (Shandong University, China)
Choi, Jae Hoon (Ezmedicom, Korea)	Miller, Jeffrey D. (Hewlett Packard Company, USA)
Chung, Chun Kee (Seoul National University Hospital, Korea)	Moon, Chang-Ho (Kunsan National University, Korea)
Chung, Tae Kyung (Asan Medical Center, Korea)	Mordelet, Patrick (Ministry of Health, France)
Dilani, Alan (NOVUM Research Park, Sweden)	Myers, Esther (The American Dietetic Association, USA)
Fakhouri, Salah (Health Management Member of INDEX Holding, UAE)	Nagasawa, Yasushi (Kogakuin University, Japan)
Farrow, Tye (Farrow Partnership Architects, Canada)	Nair, Prem Kumar (Raffles Medical Group, Singapore)
Hanvoravongchai, Piya (Asia-Pacific Action Alliance on Human Resources for Health, Thailand)	Nishino, Kenshi (Nishino Hospital, Japan)
Hasegawa, Tomonori (Toho University, Japan)	O'Leary, Dennis (The Joint Commission, USA)
Hoelsing, Helen (Joint Commission Resources, USA)	Park, Rae Woong (Ajou University, Korea)
Hong, Joon Pio (Asan Medical Center, Korea)	Park, Dong-Kyun (Gachon University Gil Medical center, Korea)
Imanaka, Yuichi (Kyoto University, Japan)	Park, Noh-Hyun (Seoul National University Hospital, Korea)
Imoberdorf, Karin (UIA, Switzerland)	Park, In-Chool (Medipartner Co., Ltd./Ye Network, Korea)
Jung, Gyu-Young (Health Insurance Review & Assessment Service, Korea)	Park, Kyoung-Ho (Korean Society Health-System Pharmacist (KSHP), Korea)
Jung, Kee Taig (Kyung Hee University, Korea)	Pedersen, Steinar (University Hospital of Northern Norway, Norway)
Kaihara, Shigekoto (International University of Health and Welfare, Japan)	Pringle, Michael (University of Nottingham, UK)
Kang, Sehoh (Unisys Korea, Korea)	Randall, Angela (The Queen Elizabeth Hospital ? Melbourne, Australia)
Kim, Seunghwan (Electronics and Telecommunications Research Institute, Korea)	Schneider, Philip (The Ohio State University, USA)
Kim, Yoon (R & D Center for Interoperable EHR, Korea)	Seah, Jonathan (Parkway Group Healthcare, China)
Kim, Ok Nam (Korean Medical Record Association, Korea)	Shih, Chung-Liang (Taiwan Joint Commission on Hospital Accreditation, Taiwan)
Kim, Eun-Mi (Kangbuk Samsung Hospital, Korea)	Stark, David (Keppie Design, UK)
Kim, Kwang Jum (Catholic University of Korea, Korea)	Sung, Young Hee (Samsung Medical Center, Korea)
Kwon, Soonman (Seoul National University, Korea)	Timmons, Karen (Joint Commission International, USA)
Lee, Wang Jun (Sarang General Hospital, Korea)	Wung, Cathy (Taiwan Joint Commission on Hospital Accreditation, Taiwan)
Lee, Shouu-Yih Daniel (University of North Carolina at Chapel Hill, USA)	

Social Programs

Opening Ceremony



Opening Ceremony

November 6 (Tue), 2007
Time: 10:00~12:00
Venue: Convention Hall 12, COEX, Seoul

Opening Ceremony will take place at the Convention Hall of the COEX Convention Center. The Ceremony will include Opening Remarks and Keynote speech. During the Ceremony, a Korean traditional Drum performance will be coordinated for the Participants.

※Performance

TAO (Korean Traditional Drum by the TAO)

Welcome Reception



Welcome Reception

November 6 (Tue), 2007
Time: 18:00~20:00
Venue: Convention Hall 11, COEX, Seoul
Dinner: Sit-Down Dinner

Welcome Reception will take place at the Convention Hall of the COEX Convention Center. The Reception will include music and dance performances. This Reception will give you an opportunity to network with colleagues while enjoying Dinner. The cost of Welcome Reception is included in the registration fees.

※Performance

Vocal Duet (Classic & Pop)
 ALL FOR ONE (Play CANON with a twelve-stringed Korean harp & B-Boy)
 TAPKUN (Tap Dance)



Gala Dinner



Gala Dinner

November 7 (Wed), 2007
Time: 18:00~20:30
Venue: Harmony Ballroom, COEX Intercontinental Hotel, Seoul
Dinner: Sit-Down Dinner
Fee: US\$100 / Person

Gala Dinner will take place at the Harmony Ballroom of the COEX Intercontinental Hotel. If you would like to experience a special night in Seoul, you are cordially invited to the Gala Dinner. Great foods as well as fantastic performances will be served to the participants. This is a great opportunity to relax with a wonderful with each other. This evening promises to give you an unforgettable evening in Seoul

※Performance

GOREU (Korean Traditional Dance)
 VOITURE (A Cappella Group)
 NANTA (A percussion music performance about for Korean chefs preparing a dinner in a restaurant)



Closing Ceremony

November 8 (Thu), 2007
Time: 12:00~12:50
Venue: Convention Hall 12, COEX, Seoul

Closing Ceremony will take place at the Convention Hall of the COEX Convention Center. The Ceremony will include the highlights and major outcomes of the IHF 35th World Hospital Congress SEOUL 2007



NANTA

Registration

To participate in IHF 35th World Hospital Congress, you need to register in advance or on-site. Pre-registration is available by completing online registration on our website, <http://ihf.kha.or.kr>.

Notes

- +Pre-registration (Early Bird rate) will only be accepted until October 12, 2007. After that date, registration will only be available on-site at the registration desk in the COEX Convention Center.
- +Registration with the appropriate payment can only be accepted.
- +Any changes or alternations must be made in writing to the secretariat via e-mail or fax.
- +A confirmation letter (including registration number) will be sent within two weeks via e-mail upon receipt of your registration form and full payment.

Registration fee

Participation category		Early bird rate (By October 12, 2007)	On-site registration (November 6 - 8, 2007)
Main Congress	IHF Member	USD 500	USD 600
	Non Member	USD 550	USD 650
	Accompanying person	USD 200	USD 200
Social Program	Welcome Reception	Free	Free
	Gala Dinner	USD 100	

※ Accompanying person: Accompanying persons' registration is limited to the participant's family only.

Payment Method

Credit card

- +Payment with international credit card such as VISA, Master, AMEX, and Diners is available through online registration program.

Bank transfer

- +All bank charges for remittance must be paid by the participant.
- +A copy of the receipt of the bank remittance with the participant's name should be sent to the secretariat by fax or e-mail.
- +If payment is made for more than one person or by an organization, please make sure all names are indicated with a copy of the receipt of the bank remittance.

Bank / Branch	Shinhan Bank / Mapoyeok Branch
Account No.	180-003-604269
Beneficiary	Korean Hospital Association
SWIFT code	SHBKKRSE
Bank address	1st floor Daenong Building, 33-1 Mapo-dong, Mapo-gu, Seoul, Korea

Registration Secretariat

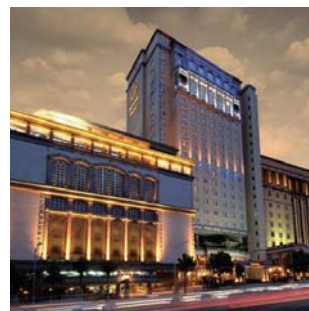
Tel : +82-2-6000-8186 Fax : +82-2-6000-1306 E-mail : managing@kha.or.kr
 COEX convention team, World Trade Center, Samseong-dong, Gangnam-gu, Seoul, 135-731, Korea

Accommodations

All the participants are entitled to the deeply discounted special rates that have been arranged by Accommodation & Tour bureau. To obtain the special rates, please make your hotel reservations at Accommodation & Tour bureau.



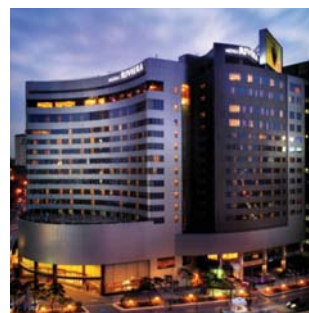
1. COEX InterContinental Seoul [★★★★★]
Address 159 Samseong-dong, Gangnam-gu, Seoul, Korea
Tel +82-2-3452-2500
Fax +82-2-3430-8000
Website http://seoul-coex.intercontinental.com
Room rate Single: KRW 230,000 Double/Twin: KRW 250,000
Distance 5 min. on foot



2. Imperial Palace [★★★★★]
Address 248-7 Nonhyun-dong, Gangnam-gu Seoul, Korea
Tel +82-2-3440-8000
Fax +82-2-3440-8200
Website http://www.imperialpalace.co.kr
Room rate Single/Double/Twin: KRW 150,000
Distance 15 min. by car



3. Ramada Seoul [★★★★★]
Address 112-5 Samseong-dong, Gangnam-gu, Seoul, Korea
Tel +82-2-6202-2000
Fax +82-2-6202-2001
Website http://www.ramadaseoul.co.kr/eng
Room rate Single: KRW 120,000 Double/Twin : KRW 140,000
Distance 15 min. by car



4. Riviera Seoul [★★★★★]
Address 53-7 Chongdam-dong, Gangnam-gu, Seoul, Korea
Tel +82-2-541-3111
Fax +82-2-546-6111
Website http://www.hotelriviera.co.kr/eng/index.asp
Room rate Single : KRW 120,000 Double/Twin: KRW 140,000
Distance 10 min. by car



5. ibis Seoul [★★★]
Address 893-1 Deachi-dong , Gangnam-gu, Seoul , Korea
Tel +82-2-3454-1101
Fax +82-2-3454-1946
Website http://www.ambatel.com/ibis/english
Room rate Single/Double/Twin: KRW 94,500
Distance 15 min. on foot

※ For more information about Budget-Inn Hotels around COEX Convention Center, please visit our website <http://ihf.kha.or.kr>

Location of the official hotels



Notes

- ✦ The closing date for hotel reservations is October 12, 2007. After that date, we can not guarantee the vacancy or the rates
- ✦ All rates exclude breakfast. 10% Service charges and 11% Tax will be added up to room rates. (For ibis Seoul, there is only 10% tax charge.)
- ✦ Your credit card information is required to guarantee your hotel reservation. With the credit card information, one night room rate will be charged with in one week. In addition, the rest of the payment will be made by October 24, 2007.
- ✦ If you do not have any credit card, please remit the amount of one night room rate to the bank account below within one week. The rest of the payment should be made by October 24, 2007.
- ✦ The official hotels will be allocated on a first come first served basis. Accommodation & Tour Bureau reserves the right to make your reservation at a similar hotel category if your choice of hotel is full.
- ✦ If you want to stay in a serviced apartment, you may book at the "OAKWOOD COEX CENTER(five-star)" adjacent to the COEX convention center. For the reservation, please contact the Housing Bureau.

Bank/Branch	Korea Exchange Bank / Yeoksam-dong Branch
Account No.	211-JSD-100282-9
Beneficiary	Kim's Travel Service Co., Ltd
SWIFT code	KOEXKRSE
Bank address	838, Yeoksam-dong, Gangnam-gu, Seoul, Korea

- ※ Details of payment: IHF 2007
- ※ All bank transfer fees should be paid by the participant

Accommodation & Tour Bureau
 Tel : +82-2-572-9998 Fax : +82-2-575-9932 E-mail : convention03@kimstravel.com
 6F, Yuil B/D 411-14, Dogok-dong, Gangnam-gu, Seoul, 135-270, Korea

Venue

World Trade Center

Spread over a 50-acre complex, the various buildings of World Trade Center Seoul (WTC Seoul) offer many resources for tourism, transportation, trade, and international business. Easy transportation to and from the WTC Seoul and downtown and other parts of Seoul, Incheon International Airport, and many hotels via bus, subway, or car make it a convenient location for holding conventions and important meetings.

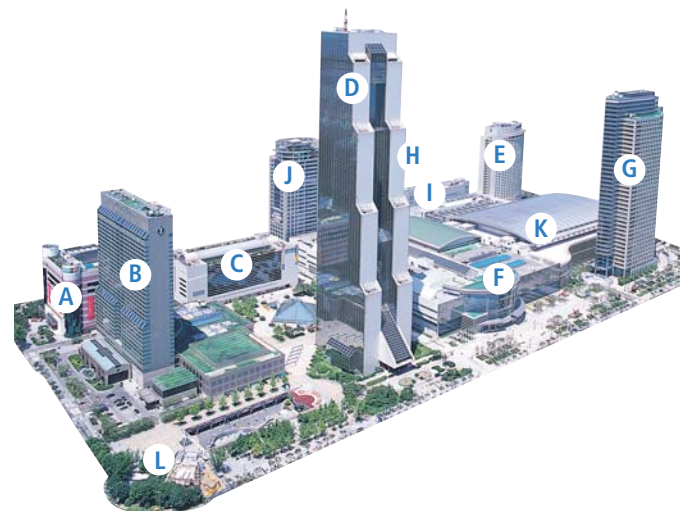
The site was chosen for the 3rd General Meeting of ASEM (Asia-Europe Meeting). Over 5,000 representatives came from more than 25 countries to discuss issues international diplomacy and cooperative relations between the nations of Europe and Asia.

Layout of the World Trade Center

World Trade Center Seoul (WTC Seoul)

Home of the Korea International Trade Association, the WTC Seoul contains numerous businesses and organizations dedicated to international trade and business. Most are related to trade, finance, insurance, customs, and immigration. The building contains a computerized library and a Trade Service Center offering consulting on trade-related issues.

- A Hyundai Department Store
- B Grand InterContinental Hotel
- C Korea City Air Terminal
- D Trade Tower
- E COEX InterContinental Hotel
- F COEX Convention & Exhibition Center
- G ASEM Tower
- H Oakwood Premier COEX Center
- I Seven Luck Casino
- J City Airport Tower
- K Korea City Air Terminal
- L Samsong Subway Station



Major facilities include

- F** Convention and Exhibition Center (COEX)
COEX is Asia's leading meeting venue, hosting numerous international meetings, exhibitions and conventions. The COEX facilities have over 46,000 sq. meters of exhibition halls, meeting rooms, and office space. Its state-of-the-art facilities can handle all types of international exhibitions, banquets, and trade shows.
- H** Korea City Air Terminal (KCAT)
The Korea City Air Terminal (KCAT) was founded in 1985 and offers almost all of the service of a full-scale airport. Customers can buy tickets, check-in their baggage for their flights, and complete departure procedures without dealing with the long lines at the airport.
- I** Seven Luck Casino
Seven Luck is a casino run by the subsidiary company of Korea Tourism Organization. It provides state-of-the-art machine games, various table games and events. Seven Luck Casino has 3 different themes. You will find not only casino but also various shopping, tour and leisure activities at each location.

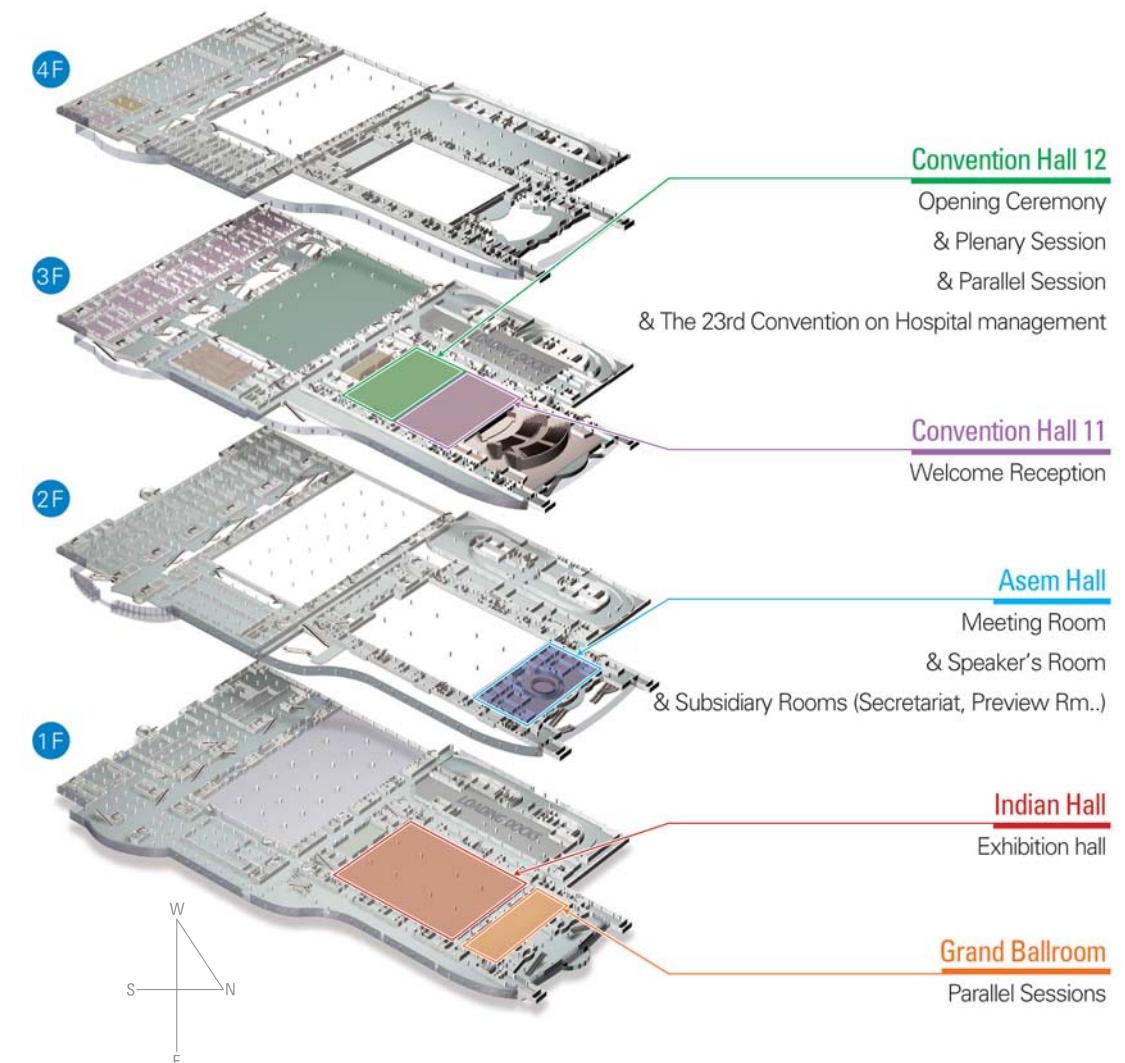
COEX Convention and Exhibition Center

The IHF 35th World Hospital Congress will be held at COEX Convention Center in Seoul, Korea. COEX is a Korea's most fabulous world-class convention center where over 150 exhibitions, conventions, and special events held each year.

COEX features 12 specialty exhibition halls, 61 meeting rooms including a convention hall with a maximum capacity of 7,000 persons, top-of-the-line international standard facilities, and experienced management. COEX also features elegant ASEM Hall, designated for the 2000 ASEM summit, a space suitable for your most important meetings. All meeting rooms feature simultaneous translation facilities, AV equipment, and flat-panel screens to guide visitors to the appropriate venue.



Venue plan



Star Alliance, the New Official Airline Network

The Star Alliance Members are pleased to be appointed as the Official Airline Network for the IHF 35th World Hospital Congress.

To obtain details and conditions on Star Alliance™, Conventions Plus discounts and participating airlines*, please contact your local Star Alliance Member, and quote the following Event Code OZ021S7.



When making your travel plans please present confirmation of your registration on proof of attendance and ensure that the Event Code is listed on your ticket.

For further information about Star Alliance Members, please visit www.staralliance.com/conventionplus

*Participating airlines for this event: Air Canada, Asiana Airlines, Austrian Airlines, LOT Polish Airlines, Lufthansa, SWISS International Air Lines, Scandinavian Airlines, Singapore Airlines, Spanair, TAP Portugal, THAI, United.

Hospital Tour

The organizing office has selected two representative hospitals and prepared Hospital tour program to enable overseas participants to experience Ubiquitous healthcare as well as advanced Korean hospital. Hospital tour program will be offered on Thursday, November 8th.

Severance Hospital

Severance Hospital was established in 1885 as Korea's first institution to practice and teach western medicine. Recently, a new 21-story main hospital building was constructed to better accommodate our daily patient load of 7,000 outpatients and 2,000 inpatients. Consisting of 5 specialty hospitals (Cancer, Children's, Cardiovascular, Eye & ENT, Rehabilitation), an advanced automated IT infrastructure, and state-of-the-art medical equipment (surgical robot, iMRI, Tomotherapy, PET/CT), Severance is making great strides to become the medical hub of East Asia.

www.yuhs.or.kr/en/



Seoul National University Bundang Hospital (SNUBH)

Seoul National University Bundang Hospital (SNUBH), open since 2003, is a completely digitalized hospital that utilizes the first Integrated Electronic Medical Record System ever constructed in Korea. The 'SNUBESTcare', Integrated Electronic Medical Record System in SNUBH, stands for Seoul National University Bundang hospital Electronic System for Total Care, this is a unique system based on Seoul National University Hospital's hundred years of medical experience and know-how.

www.snuh.org/eng/



Tour Programs

Korea is an exciting tourist destination with many interesting places to visit and many different cultures to experience. To explore Korea's diversified and unique heritage, special tour packages for IHF 35th World Hospital Congress are listed below as an option.

	Nov. 3-5 (Sat-Mon)	Nov. 6 (Tue)	Nov. 7 (Wed)	Nov. 8 (Thu)	Nov. 9-11 (Fri - Sun)
Morning	Ancient Capital : Gyeongju Tour	Meditation in Temple	Seoul City Tour	DMZ Tour	Morning Seoul Tour National Museum & Gallery Jeju Island Tour
Afternoon		Afternoon Seoul Tour		Korean Folk Village	
Night		Fantastic Night Tour		Night Shopping	Performing Art (Theater)

- ✦ The closing date for tour reservations is October 12, 2007.
- ✦ Tour courses & prices are changeable due to local situation.
- ✦ Your credit card information is required to guarantee your tour reservation. With the credit card information, payment for your tour program will be made by October 24, 2007.
- ✦ If you do not have any credit card, please remit the total fee of your tour program to the bank account below by October 24, 2007
- ✦ All needed details will be reached to you within one week with a confirmation letter via e-mail.
- ✦ If minimum persons are not reached, the programs may be cancelled or substituted by another similar program.

Bank / Branch	Korea Exchange Bank / Yeoksam-dong Branch
Account No.	211-JSD-100282-9
Beneficiary	Kim's Travel Service Co., Ltd
SWIFT code	KOEXKRSE
Bank address	838, Yeoksam-dong, Gangnam-gu, Seoul, Korea

※ Details of payment : IHF 2007

※ All bank transfer fees should be paid by the participant.



Half Day Tours

HT-1 Meditation in Temple

Bongeunsa Temple Korean Buddhism has been the spiritual refuge of Korean people for 1,700 years. We invite you to the Temple Life Program, through which your state of mind might be observed and the real taste of Korea's traditional culture could be experienced.

Date	November 6 (Tue.)
Time	09 : 00 ~ 13 : 00
Price	KRW 95,000 (excluding lunch) / Minimum 20 persons
Course	Bongeunsa Temple (Zen Experience & Tea Ceremony)



HT-2 Afternoon Seoul Tour

Changdeok Palace is surrounded by trees and abuts a wooded hillside on the northern fringe of Seoul. By almost everyone's estimation, Changdeok is the most beautiful and best preserved of Seoul's half dozen palaces. Indeed, the historical significance of the palace and the adjacent "Secret Garden" were dully recognized when designated as a UNESCO World Heritage Site.

Date	November 6 (Tue.)
Time	13 : 00 ~ 17 : 30
Price	KRW 48,000 (excluding lunch) / Minimum 4 persons
Course	Changdeokgung Palace - Secret Garden - Changgyeonggung Palace



HT-3 Morning Seoul Tour

Gyeongbok Palace, built in the late 14th century by the founder of the Joseon Dynasty. There are the majestic edifice, Geunjeongjeon, the spacious 2-story pavillion, "Gyeongheoru" and nestled in the middle of lotus pond, "Hyangwonjeong".

National Folk Museum, also situated on the palace compound. It displays the religious rituals, dwelling customs, household tools, food, traditional costumes and the social dynamics of traditional Korean Life.

Date	November 8 (Thu.)
Time	09 : 30 ~ 12 : 00
Price	KRW 45,000 (excluding lunch) / Minimum 4 persons
Course	Gyeongbok Palace - National Folk Museum



HT-4 Korean Folk Village

Korean Folk Village offers a unique glimpse into Korea's past. Here in reconstructed farmhouse, residences of the nobility and other buildings of several centuries ago, a flourishing community of potters, milers, blacksmith pipe-makers and other craftsmen continue to work as our ancestors did.

Date	November 8 (Thu.)
Time	13 : 00 ~ 17 : 30
Price	KRW 65,000 (excluding Lunch) / Minimum 4 persons
Course	Korean Folk Village



Night Tours

NT-1 Fantastic Night Tour

Seoul Tower is equipped with observation windows and a revolving restaurant with a full circle view.

Cheonggye-cheon This is river which is through the heart of Seoul city. It has been existed since Joseon Dynasty. Recently, it has been re-constructed. There are many things, such as Bridges, Water Fall, Fountain and Wall painting etc.

Hangang River, a symbol of Seoul, runs through Seoul from east to west with an average width of 175m.

Date	November 6 (Tue.)
Time	18 : 30 ~ 22 : 00
Price	KRW 80,000 / Minimum 4 persons
Course	Seoul Tower - Cheong-gye cheon(Stream) - Hangang River Cruise



NT-2 Night Shopping Tour

Myongdong Fashion Town compared to Namdaemun Market or Dongdaemun Market, many good-quality brands are sold in Myeong-dong. You can purchase good-quality products at the department stores or other fashionable products at reasonable prices at Migliore or Avatar.

Dongdaemun Market is the most famous night market in Korea. Its variety of wholesale items provides you with the paradise of night shopping. The modern fashion items are a real attention.

Date	November 8 (Thu.)
Time	18 : 00 ~ 22 : 00
Price	KRW 80,000 / Minimum 4 persons
Course	Namdaemun Market - Myong-dong Fashion Town - Dongdaemun Market - Itaewon Shopping Street



NT-3 Performing Art - Korean Traditional Performances

Korean chamber music combines traditional Korean strings, including Haegeum, Gayageum, and other Western musical instruments to produce a special kind of music. It will provide an unforgettable experience to the audiences with the core of the modernized form of Korean music as a part of the ambitious project of globalization of traditional Korean music.

Date	November 8 (Thu.)
Time	16:00 ~ 17:20
Price	KRW 68,000 / Min. 10 persons
Course	Shinawi Concert and Salpuri - Pansori- Samgomu - Chamber Music - Taepyeongmu - Pangut and Sogochum - Wearing Korean Costume (In Cheongdong Theater)



Full Day Tours

FT-1 Seoul City Tour

Gyeongbok Palace The buildings within Gyeongbokgung are more than 600 years old, however many of the buildings were destroyed in a fire during the wars. Later, the government and the nation as a whole worked hard to restore Gyeongbokgung, and so now it has become a beautiful place where both foreigners and Koreans alike seek out to enjoy. Korean Folk Village offers a unique glimpse into Korea's past. Here in reconstructed farmhouse, residences of the nobility and other buildings of several centuries ago, a flourishing community of potters, milers, blacksmith pipe-makers and other craftsmen continue to work as our ancestors did.



Date	November 7 (Wed.)
Time	09 : 00 ~ 17 : 00
Price	KRW 85,000 (including Lunch) / Minimum 4 persons
Course	Cheonggyecheon Stream - Pass by Blue House - Gyeongbok Palace - National Folk Museum - Jogyesa Temple - Lunch - Korean Folk Village

FT-2 Demilitarized Zone Tour

Demilitarized Zone is now the only cold war area in the world after the collapse of the Berlin wall and ongoing peace negotiations are still head at the truce village periodically.

The 3rd Tunnel & Dora Observatory The 3rd Tunnel was discovered on October 17, 1978. It is located 52km from Seoul. Approximately 10,000 soldiers can move through this tunnel in one hour. Mt. Dora Observation Platform is located nearby the 3rd Tunnel. From this observation platform, North Korean military personnel are visible, and so are the city of Gaeseong and the Geumgangsans Diamond Mountains.



Date	November 7 (Wed.)
Time	08 : 00 ~ 16 : 00
Price	KRW 80,000 (including lunch) / Minimum 4 persons
Course	Imjingak Park - Freedom Bridge - Memorial Hall - Dora Observatory - The 3rd tunnel - Lunch - Ginseng Center

FT-3 National Museum & Gallery

National Museum of Contemporary Art, Korea is the one and only national museum where you can see Korean and foreign artwork in one place. It has world-class facilities and an outdoor sculpture exhibit. The gallery building was built to blend well with the Mt. Cheonggesan and the unique Korean landscape behind the gallery. National Museum of Korea holds a collection of approximately 150,000 works of art. The museum holds permanent collections of ancient artifacts, historical artifacts, works of art, donations, and Asia related cultural artifacts. The garden outside the museum offers an outdoor exhibition of stone pagodas and a variety of stone constructed relics from history.

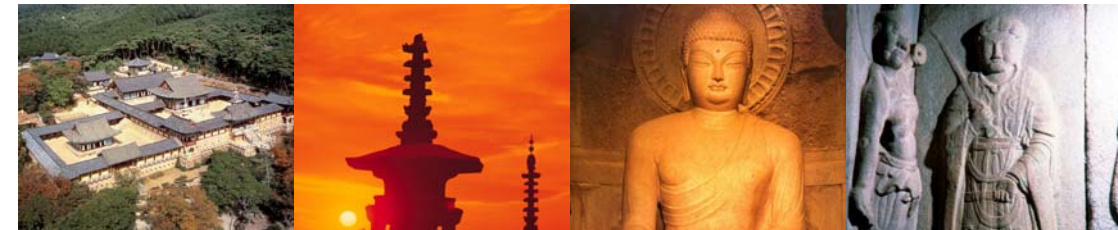


Date	November 8 (Thu.)
Time	09 : 00 - 17 : 00
Price	KRW 83,000 (including lunch) / Minimum 30 persons
Course	National Museum of Contemporary Art, Korea - National Museum of Korea

Pre & Post Congress Tours

PCT-1 Ancient Capital : Gyeongju Tour

Gyeongju, which is called the "Museum without walls", was once the capital of the Shilla Kingdom and subsequently the center of Korea when Shilla unified the peninsula in 676 A.D. UNESCO designated it as one of the world's ten most historically significant sites.



Date	November 3 (Sat.) - 5 (Mon.)
Time	2 night 3 days
Price	KRW 800,000 / Minimum 4 persons (including accommodation, American breakfast, driver & guide fee, and all transportation)
Course	Tumuli Park - Cheomseongdae Observatory - Anapchi Pond - Gyeongju National Museum - Bulguksa Temple - Seogkguram
Remarks Accommodation	Single room [★★★★★]

PCT-2 Jeju Island Tour

Jeju Island is Korea's largest island and a living folk village. Because of its romantic tropical image, it is a paradise for honeymooners.

Yongduam is a symbol of Jeju. It is especially beautiful on summer nights when the reflection of the full moon makes it look like a fairyland. The near by coast road is a favorite place for evening drives.

Jeju Folk Village Folk culture of a nation is the spirit of its people. It transforms and adapts to the age and environment and is transmitted through generations. Hallim Park is one of the most popular tourist spots on Jeju Island. It faces the pleasant scenery of Biyangdo Island, Hyeopjae Beach and Geumneung Beach.

Date	November 9 (Fri.) - 11 (Sun.)
Hours	2 night 3 days
Price	KRW 960,000 / Minimum 4 persons (including accommodation, American breakfast, driver & guide fee, and all transportations excluding the domestic air portion)
Course	Yongduam(Dragon Rock) - Folklore and Natural History Museum - Bunjae Artpia - Hallim Park - Cheonjiyon Falls - Jeju Folk Village - Seongsan Ilchulbong Park - Manjanggul Cave - Chungmun Resort(Yeomiji Botanical Garden)
Remarks Accommodation	Single room [★★★★★]



General Information

Climate

The climate of Korea is characterized by four distinct seasons: spring, summer, fall and winter. When you visit Seoul in November, you will experience Korea's autumn, the best season of the year. Autumn brings continental winds to the Korea peninsula with an average temperature of 8°C to 10°C, making the days clear and dry. We recommend bringing a sweater or a jacket for late night and early morning.

Currency Exchange

Korea's currency unit is won which comes in 1,000, 5,000 and 10,000 won bills, and 10, 50, 100 and 500 won coins. Generally, banks are open between 09:30-16:30 Monday to Friday. Automated teller machines are in operation 24 hours a day. Most large stores, hotels and restaurants in Korea will accept major international credit cards. However, it is advisable to carry some cash, since many smaller establishments and stores are unlikely to accept any credit cards.

Electricity

The standard electricity supply is 220-volts AC/60 cycles. Most hotels may provide outlet converters for 110 and 220 volts. It is advised to check with the hotel beforehand.



Passport & Visa

All visitors to the Republic of Korea must have a valid passport and visa. Visitors with roundtrip tickets from countries who have a special agreement with Korea may be exempt from the visa requirement, and can stay in Korea visa-free for periods up to 30 days or 90 days, depending on the type of agreement between two countries. For more information, please visit Ministry of Foreign Affairs and Trade at www.mofat.go.kr/me/

Tax & Tipping

Tipping is usually not customized in Korea, but it is appropriate for the excellent service. In major tourist hotels, 10% VAT and 10% service charge is added to the bills for rooms, meals and other services.

Telephone Calls

To make an international call, first dial the international dialing code (001, 002 or 008), then the country code, area code, and finally the individual number. You may rent a cell phone at the airport.

Time Zone

Korean time is 9 hours ahead of Greenwich Mean Time (GMT+9)

1330 Korea travel Phone

For English assistance or travel information, just dial 1330, and a bilingual operator will offer you detailed tourism information.



Transportation



Incheon International Airport

Incheon International Airport handles flights from all over the world. Built on an extensive area of reclaimed tidal land between two islands, Incheon International Airport is 52km east of downtown Seoul and some 15 km off the west coast of Incheon. It operates 24 hours a day. The airport code for Incheon International Airport (IIA) is ICN. Passengers arriving at Incheon will need to take a shuttle (limousine) bus from the airport to downtown Seoul. There are several bus lines and routes available, and the airport Information Counters can assist you with your travel needs. For more details about the airport, please visit www.airport.co.kr/eng/index.asp

Limousine Bus

The best method of transportation is a Limousine bus. The interval between buses is normally 10 to 15 minutes. To purchase the bus ticket, you are advised to go to the Transportation Information Counter (near the exit 2, 4, 9, 13) on the arrival floor (1st floor). The bus services for designated hotels are as follows.

Hotel	Bus Stop No.	Bus	Operation Hours	Fees
COEX InterContinental Seoul Ramada Seoul Imperial Palace	4B or 11A	Limousine(Duluxe)	04 : 55 - 22 : 30	KRW 13,000 (USD 13.90)
Riviera Seoul	5A or 11B	No.606	05 : 45 - 23 : 00	KRW 8,000 (USD 8.55)
ibis Seoul	3B or 10B	KCAT Limousine	05 : 30 - 22 : 30	KRW 13,000 (USD 13.90)

The buses go directly to the hotels except ibis Hotel. Ibis Hotel shuttle is operating eight times a day at 06:30, 07:15, 08:00, 08:45, 09:30, 15:30, 16:30, and at 17:30 from Korea City Air Terminal to the hotel. If you arrive at different time, you can request a pick up service through ibis Hotel. (TEL. 3454-1101)

Taxi

The fare from Incheon International Airport to the hotels is approximately KRW 75,000 (USD 80) for a "RegularTaxi" and KRW 98,000 (USD 105) for a "Deluxe Taxi".

Others

- Hotel Limousine Service: Most major hotels provide airport "Pick-Up" service upon request.
- Rent Car : Participants can also rent a car from the airport.

Gimpo International Airport

Participants traveling on International flight from Haneda, Tokyo will enter Korea through Gimpo International Airport.

Website : <http://gimpo.airport.co.kr/eng/index.jsp>

Sponsors

Platinum Sponsor

 Hanmi Pharm. Co., Ltd.

KT

Gold Sponsor

 **CHOONGWAE**
PHARMA CORPORATION

 **DAEWOONG**
PHARMACEUTICAL CO., LTD.

 **DONG-A PHARM. CO., LTD.**

 **SAMJIN** SAMJIN PHARM.CO., LTD.

Manufactured by
 **yuhan**
YUHAN CHEONGWON PHARM. CO., LTD.
807-1, Yangcheon-ro, Ochang-myeon,
Cheongwon-gun, Chungbuk, Korea

 Bristol-Myers Squibb Company

Silver Sponsor

 CJ Corp.

 **SHIN POONG PHARM. CO., LTD.**

 **Pfizer** Pfizer Pharmaceuticals Korea Ltd.

Bronze Sponsor

 **gsk**
GlaxoSmithKline

 **MSD**

 **sanofi aventis**
Because health matters

 **SIEMENS**
medical

 **JEIL PHARM.**
CO., LTD. SEOUL, KOREA



INTERNATIONAL HOSPITAL FEDERATION
35th WORLD HOSPITAL CONGRESS
SEOUL 2007

6 - 8 NOVEMBER, 2007 - SEOUL, KOREA - VISION AND STRATEGY FOR UBIQUITOUS HEALTHCARE